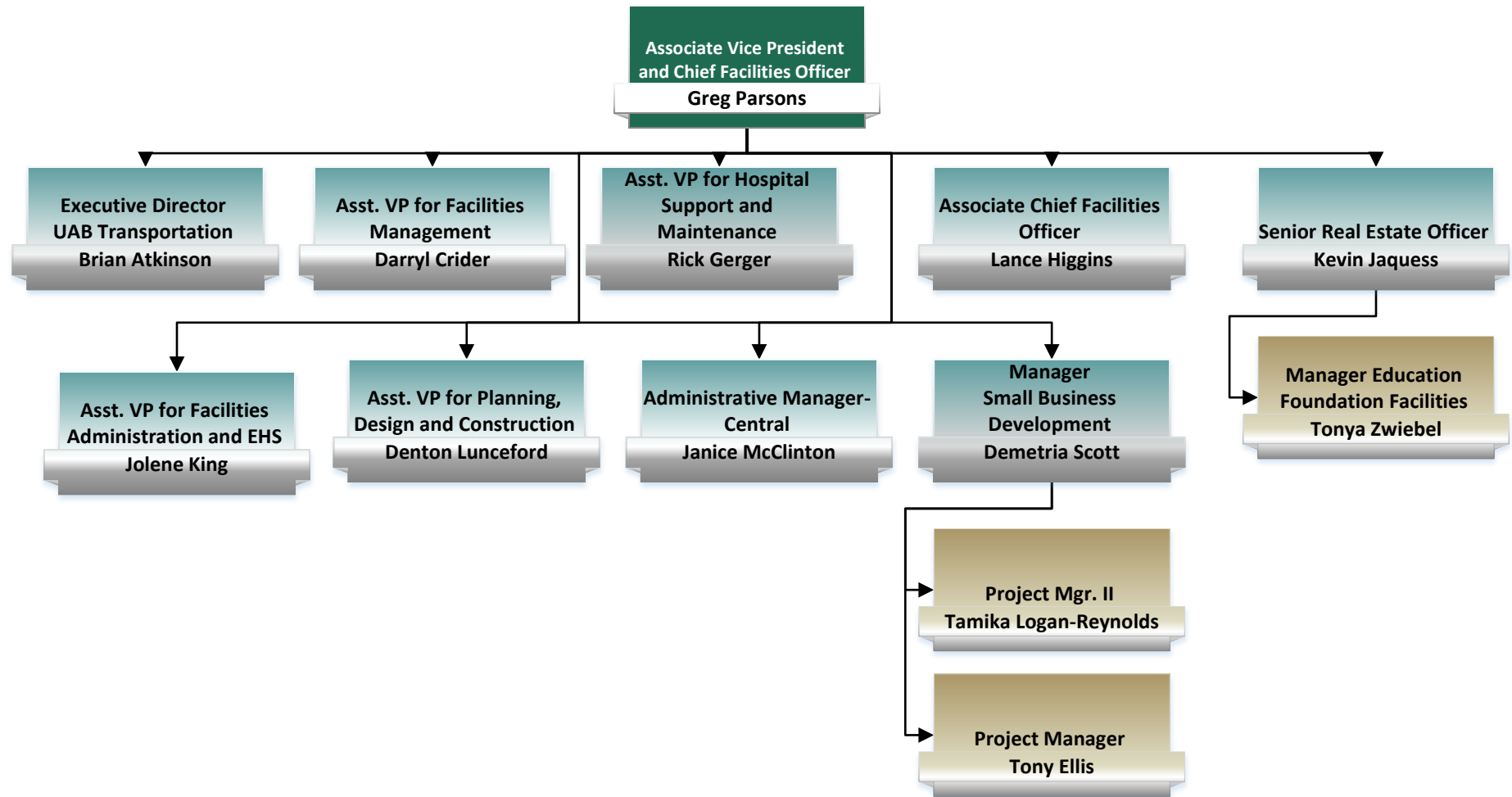
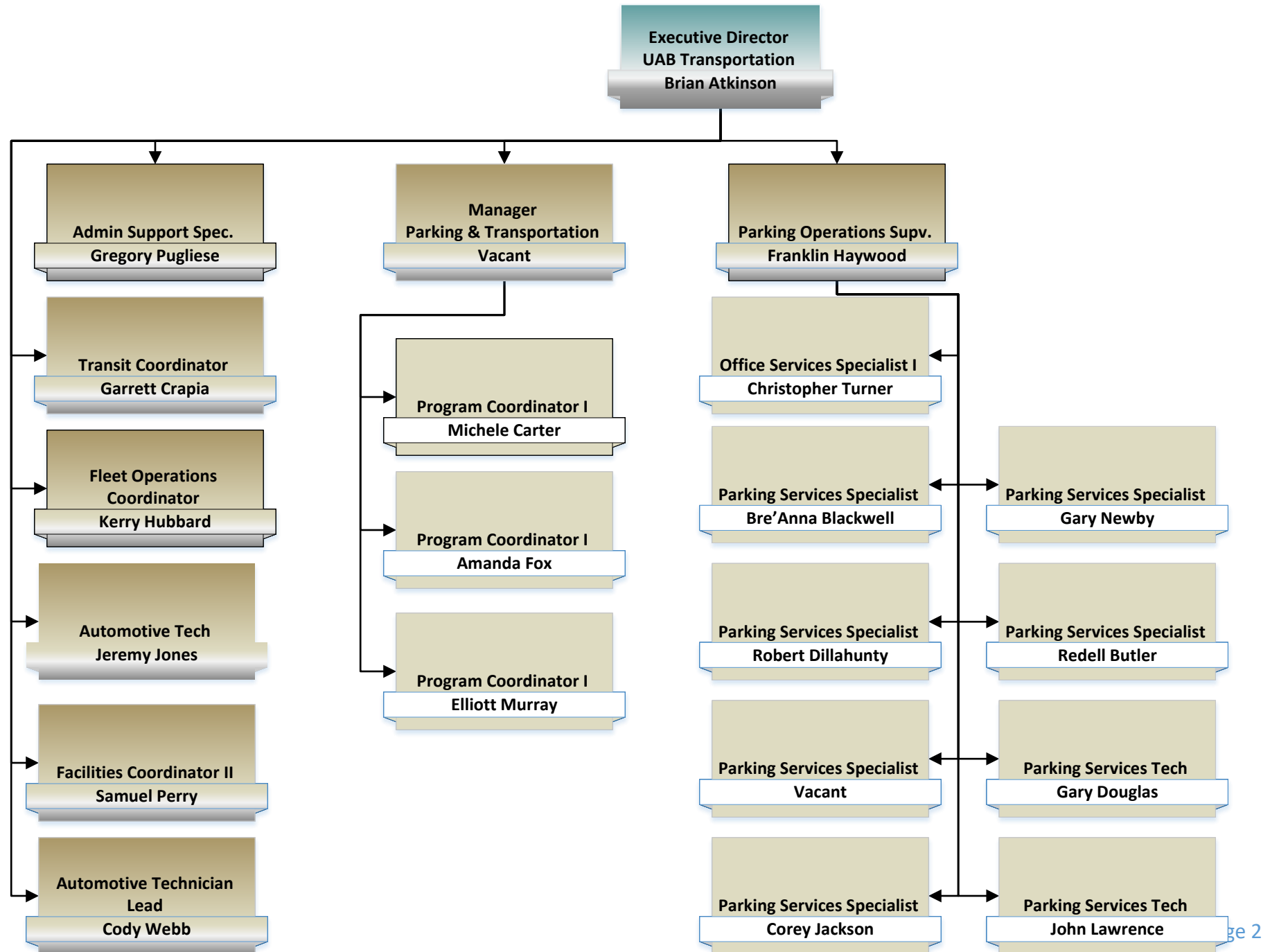


Office of the Chief Facilities Officer



UAB Transportation Services

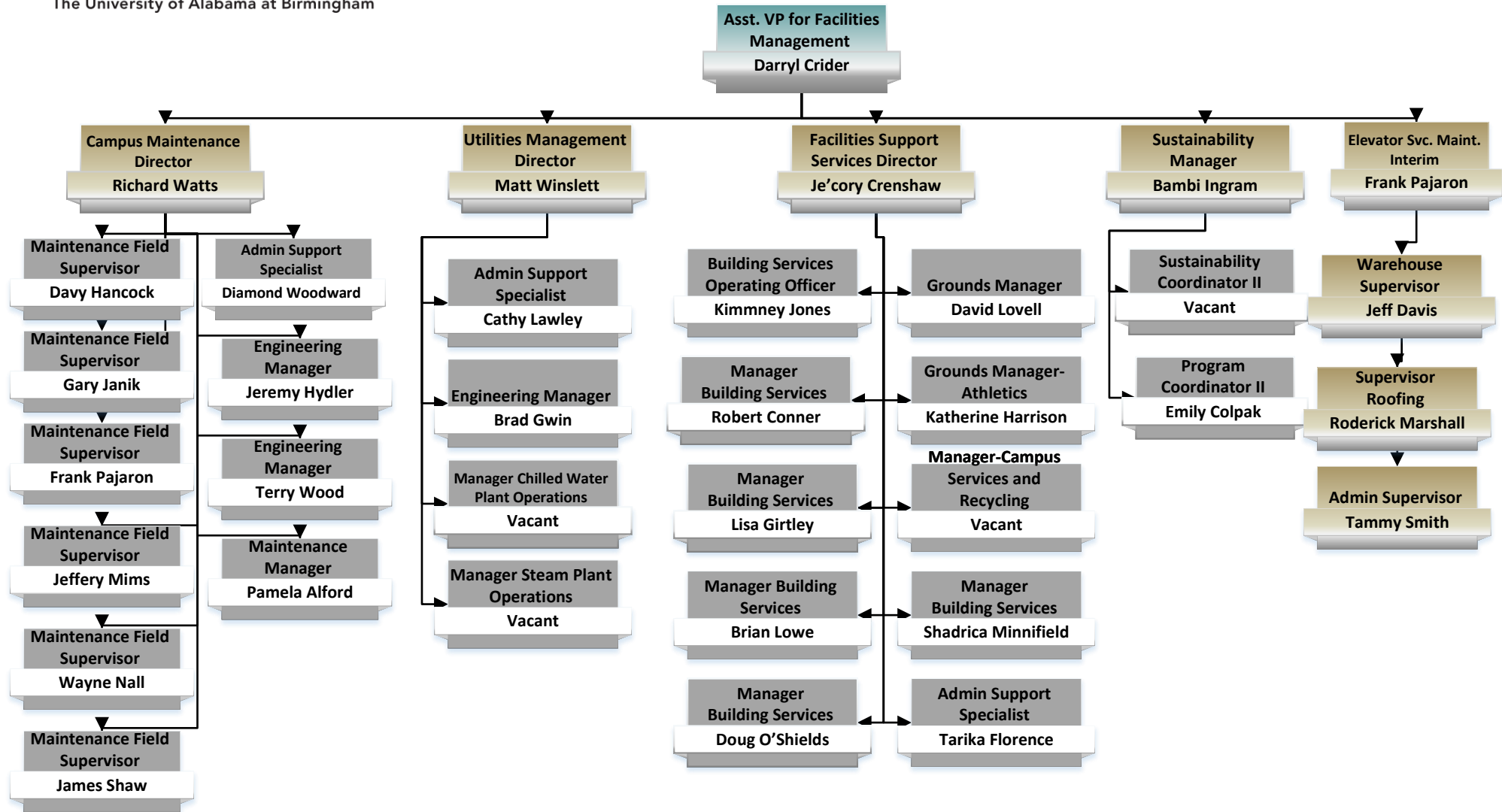




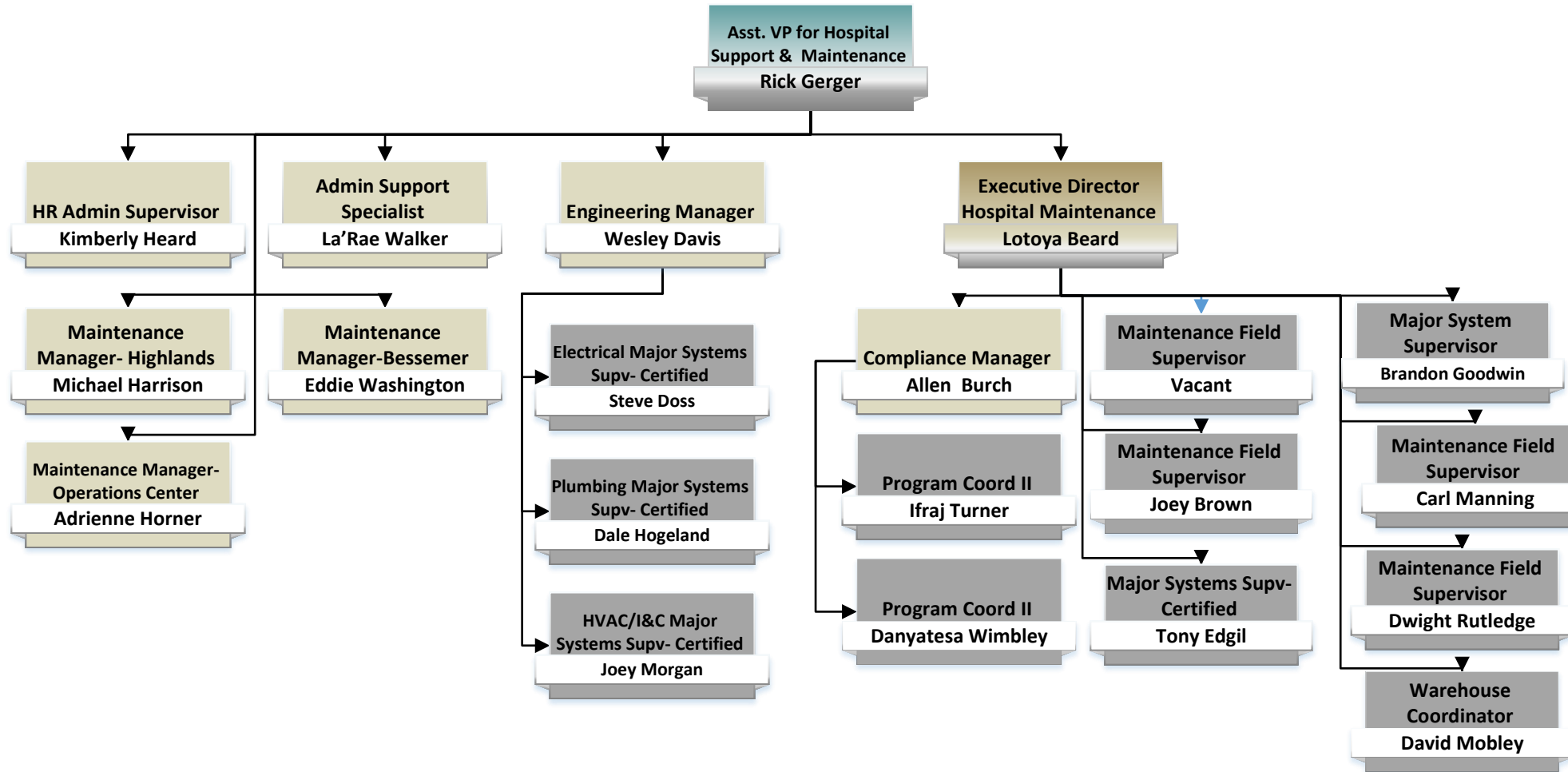
FACILITIES DIVISION

The University of Alabama at Birmingham

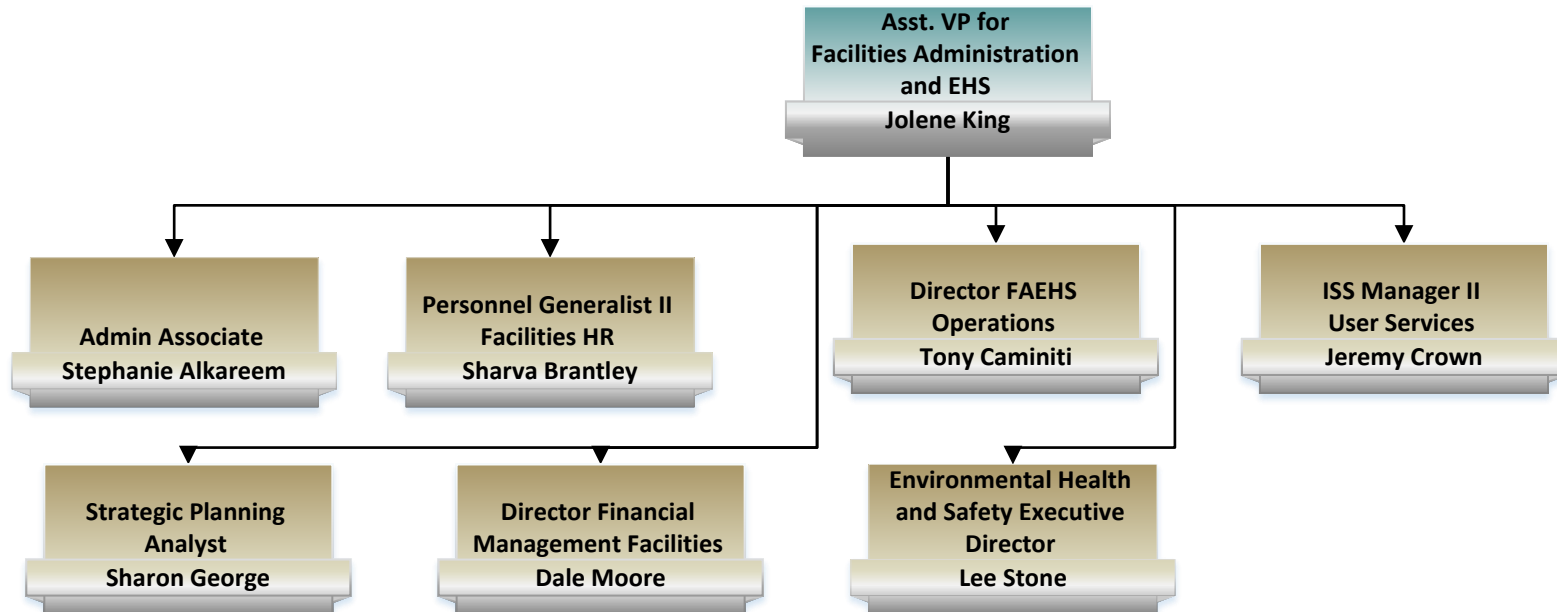
Facilities Management



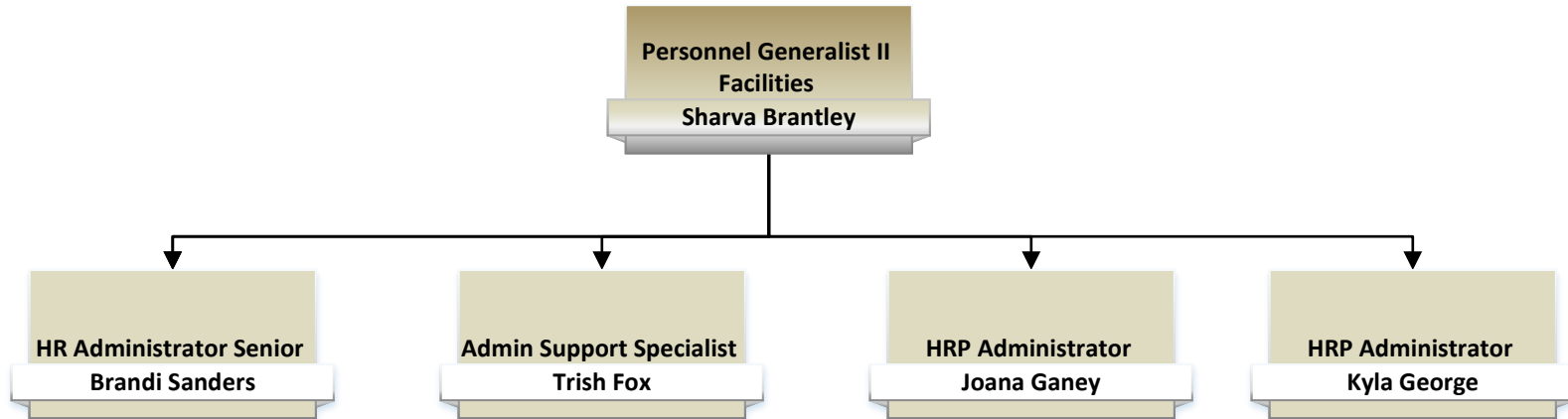
Hospital Support and Maintenance



Facilities Administration and Environmental Health and Safety



Facilities Human Resources



Facilities Areas Supported

Sharva Brantley, Personnel Generalist II: Areas Supported: Office of CFO

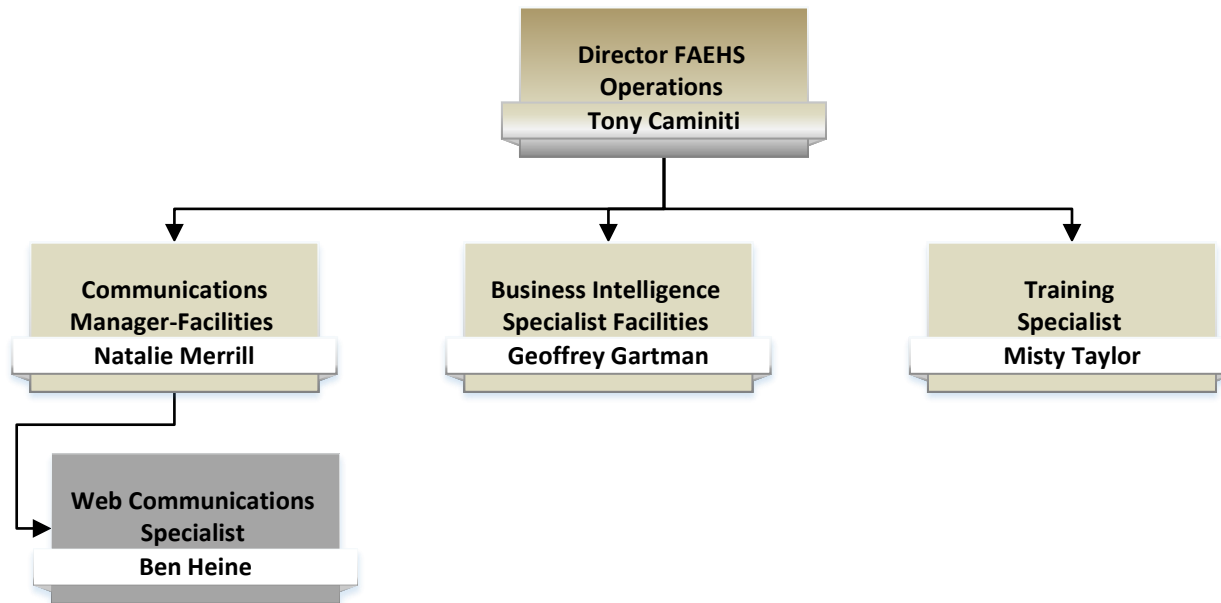
Brandi Sanders, HR Administrator Senior: Areas Supported: Facilities Support Services, Facilities Dispatch, Facilities Management, Utilities and Energy Management

Trish Fox, Admin Support Specialist: Areas Supported: Building Services, Grounds, Roofing, Sustainability, Elevator Maintenance, Recycling, and Campus Services

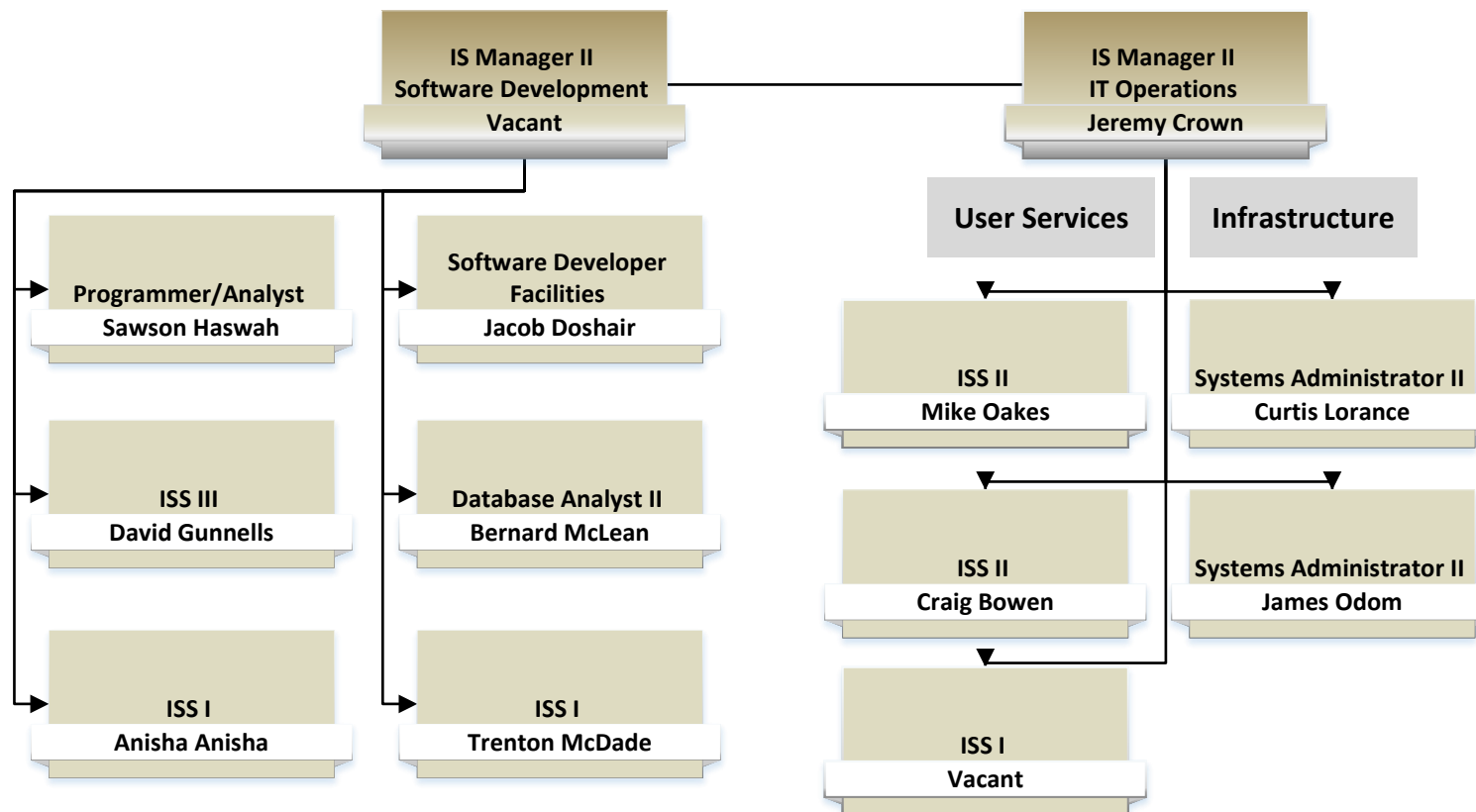
Joana Ganey, HRP Administrator: Areas Supported: Campus Maintenance, Facilities Administration and Environmental Health & Safety, Transportation, Building Services (Woodward House)

Kyla George, HRP Administrator: Areas Supported: Planning, Design, and Construction, Facilities Human Resources Office Support

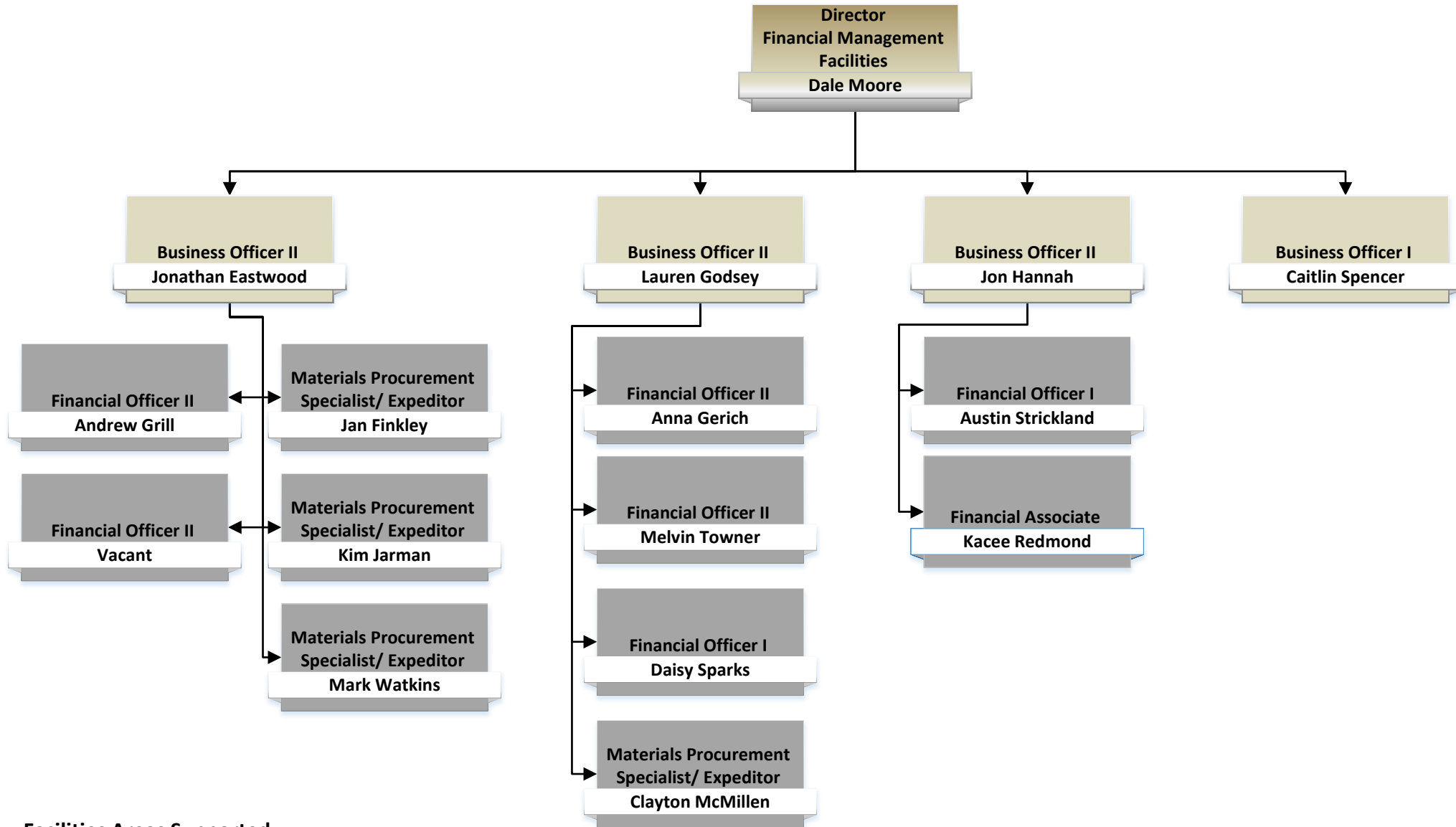
FAEHS Operations



Facilities Information Technology



Facilities Financial Management



Facilities Areas Supported

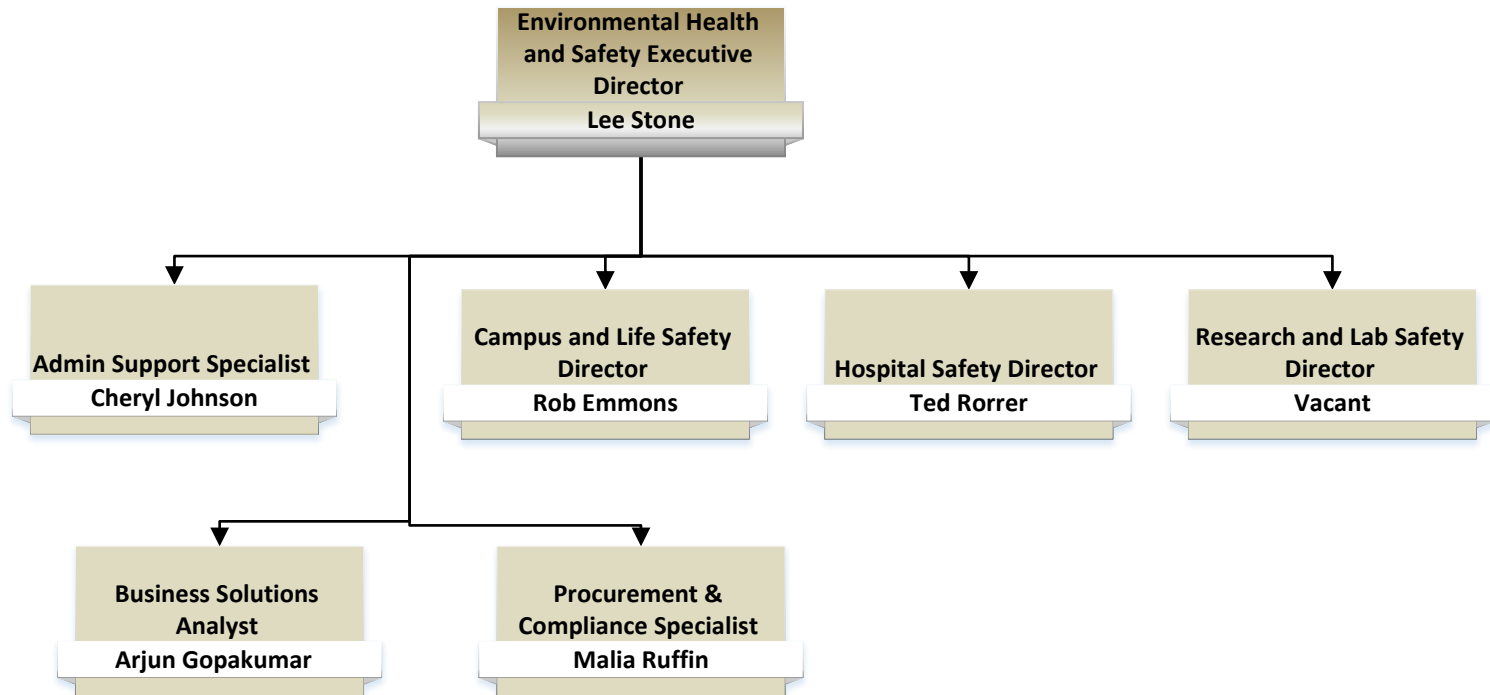
Lauren Godsey, Business Officer II: Areas Supported: Chief Facilities Officer, Hospital Maintenance, and Facilities Administration and Environmental Health and Safety

John Hannah, Business Officer II: Areas Supported: Planning Design and Construction

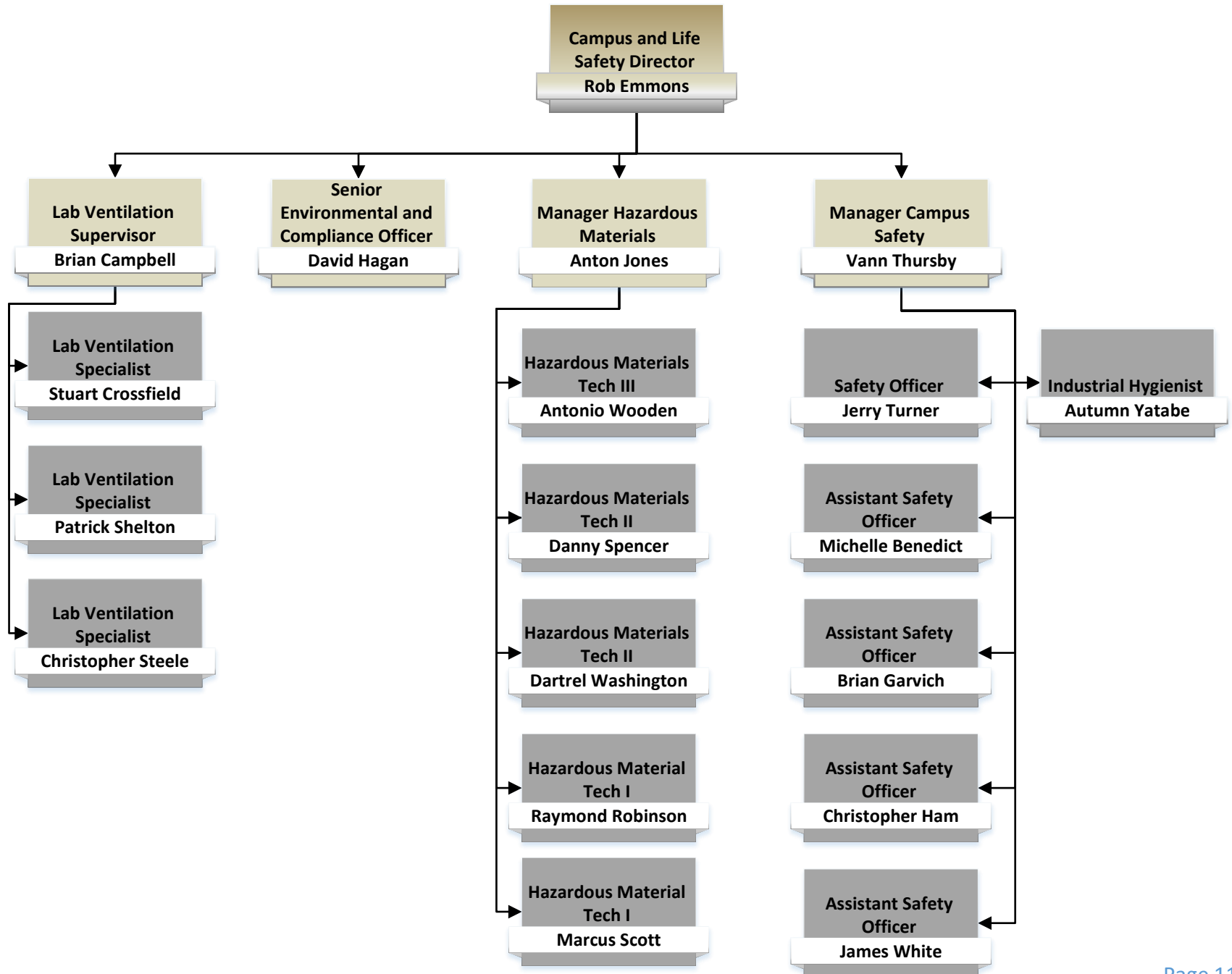
Jon Eastwood, Business Officer II: Areas Supported: Facilities Management

BOI: Areas Supported: Chief Facilities Officer & Facilities Business Units

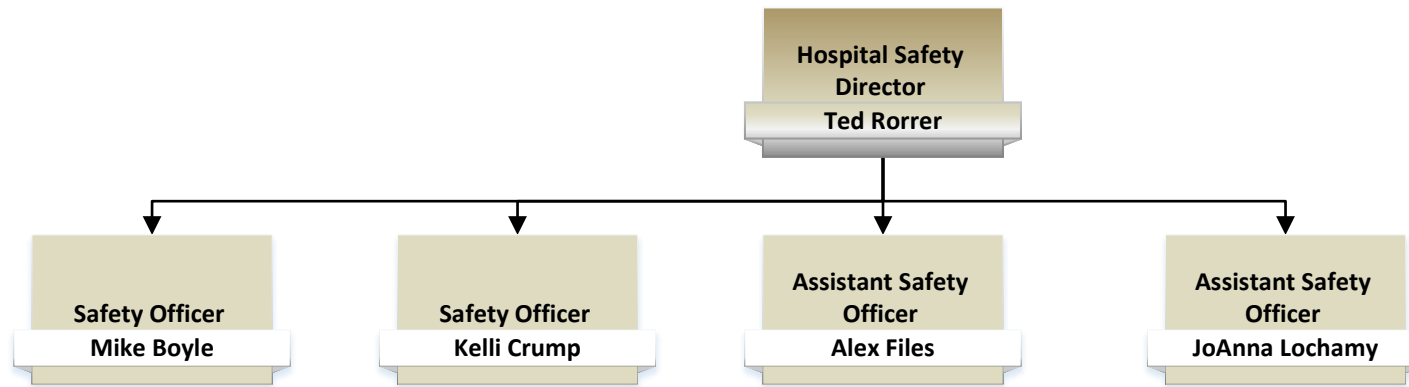
Environmental Health and Safety



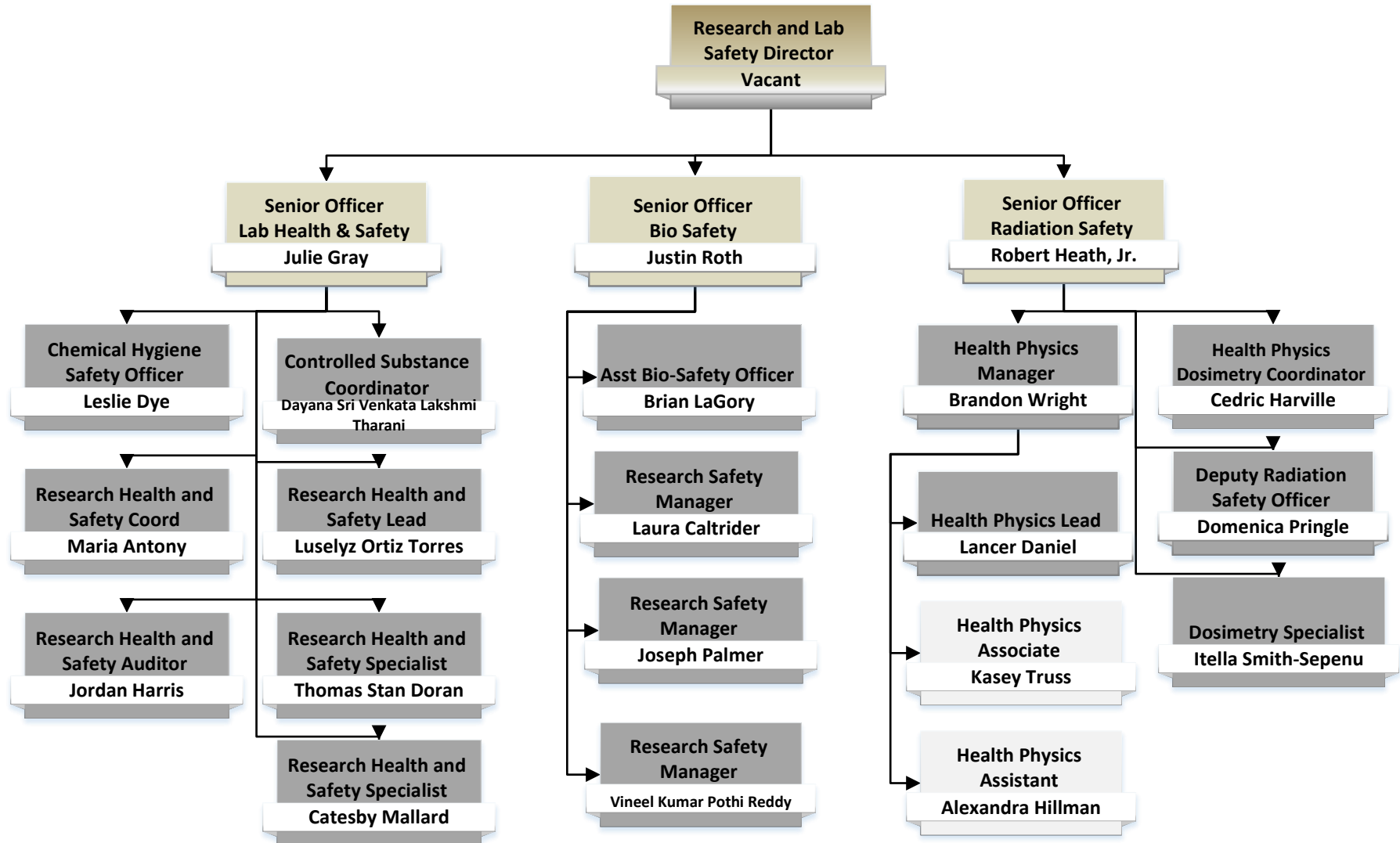
Campus and Life Safety



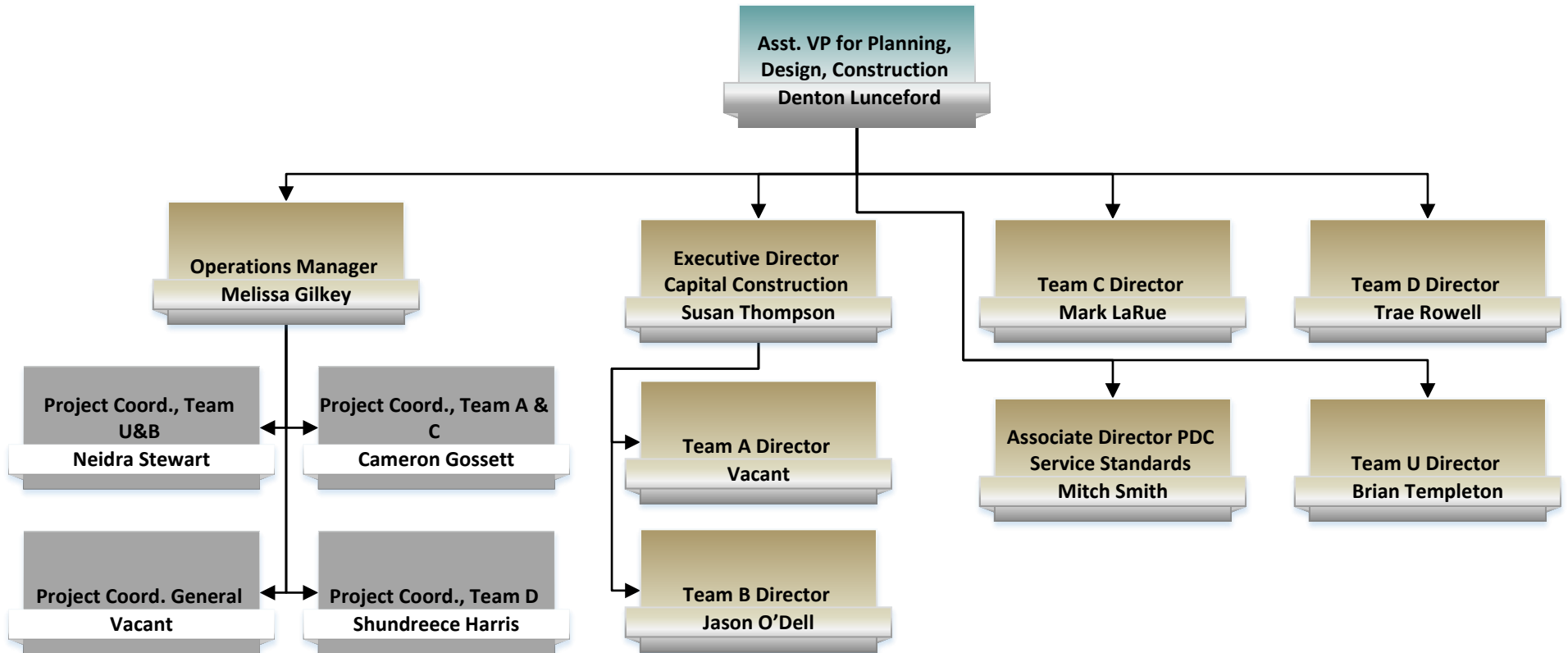
Hospital Safety



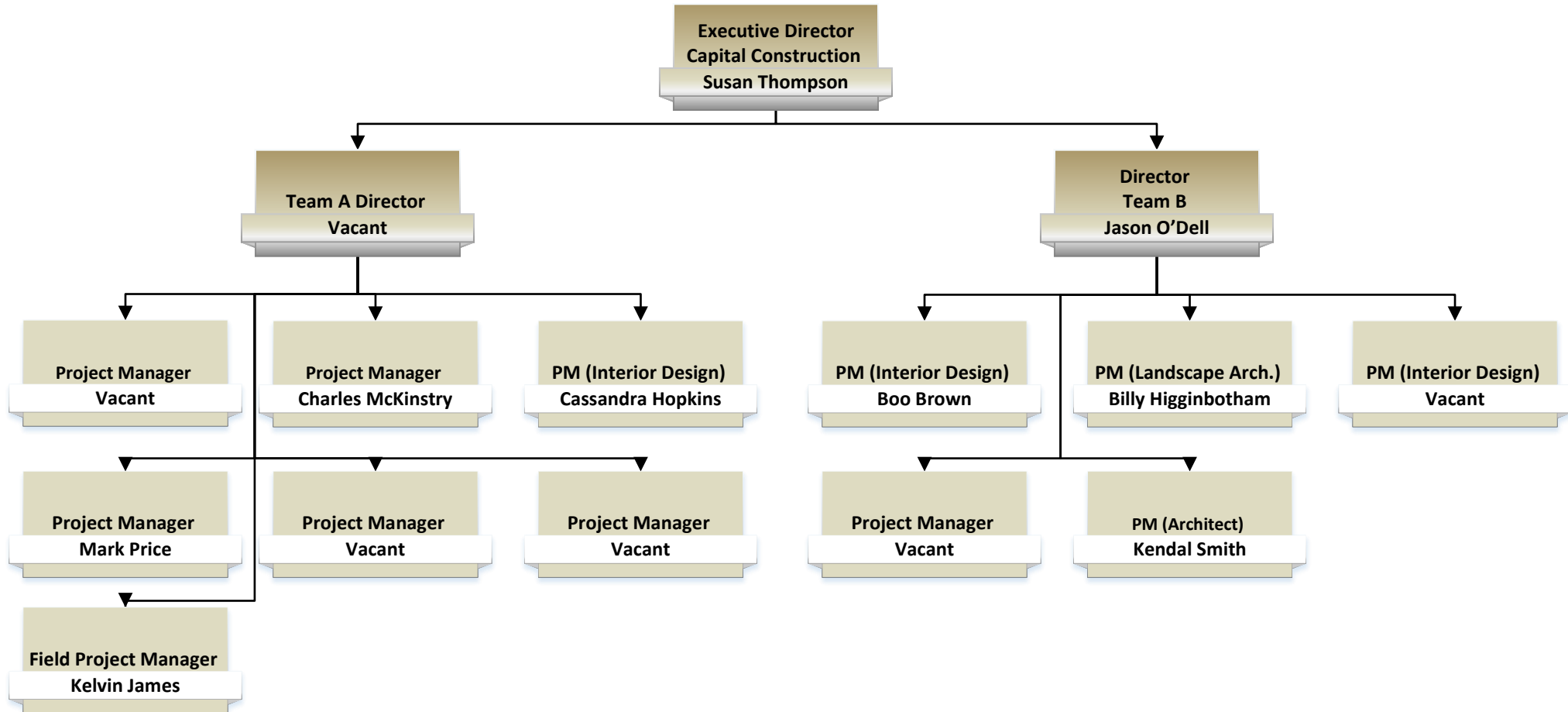
Research and Lab Safety



Planning, Design and Construction



Planning, Design & Construction Team A & Team B



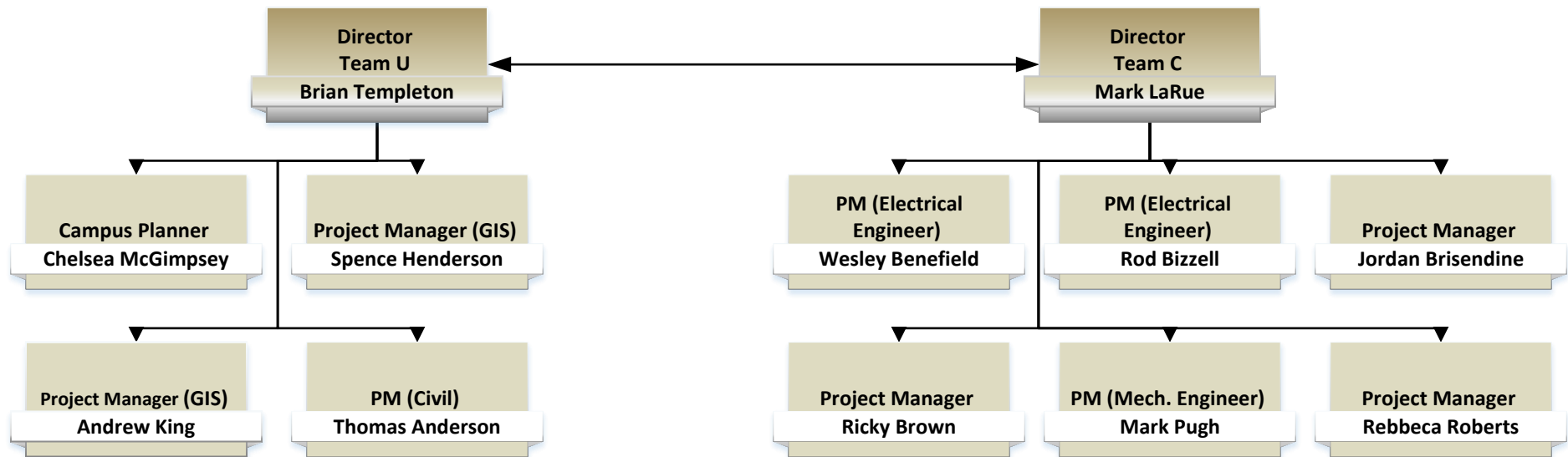
Planning, Design and Construction Team A

- | | |
|---|--|
| <ul style="list-style-type: none"> • School of Medicine • School of Health Professions • Central Information Technology • Nursing | <ul style="list-style-type: none"> • Optometry • Dentistry • Animal Research • VP Research |
|---|--|

Planning, Design and Construction Team B

- | | |
|---|--|
| <ul style="list-style-type: none"> • Provost • Art & Sciences • Business • Student Services | <ul style="list-style-type: none"> • Engineering • Education • Graduate School • School of Public Health |
|---|--|

Planning, Design & Construction Team U & Team C



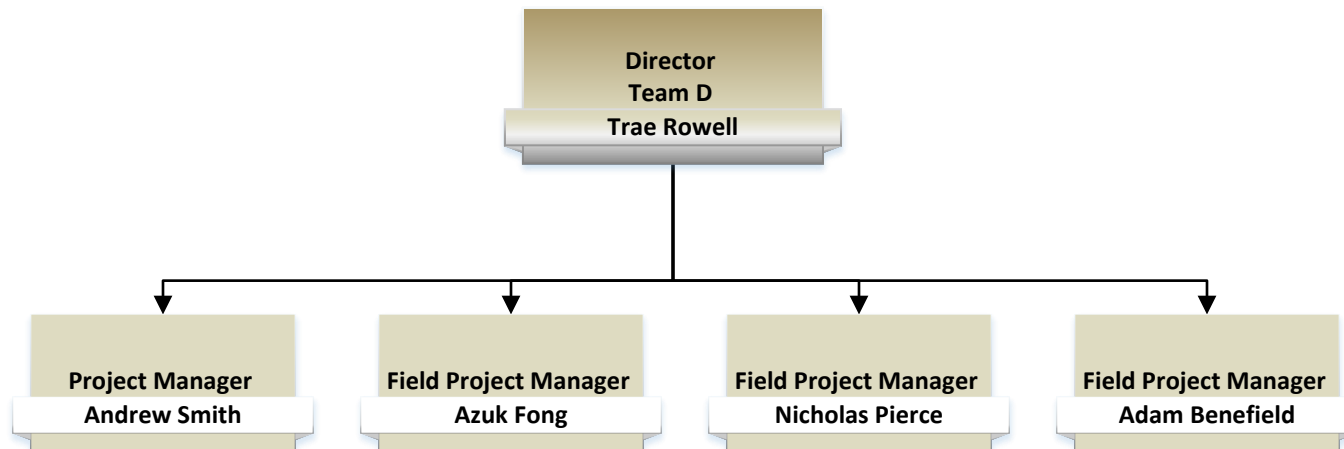
Planning, Design and Construction Team U

- | | |
|--|--|
| <ul style="list-style-type: none"> • Landscape Master Plan • City Planning Liaison • ACDP • UAB-Property | <ul style="list-style-type: none"> • Landscape Architecture Civil • Utilities & Maintenance • Athletics • Parking & Transportation |
|--|--|

Planning, Design and Construction Team C

- | | |
|--|--|
| <ul style="list-style-type: none"> • Maintenance & Utilities • Deferred Maintenance • Parking Decks | <ul style="list-style-type: none"> • Condition Assessment Standards |
|--|--|

Planning, Design & Construction Team D



Planning, Design and Construction Team D

- | | |
|---|---|
| <ul style="list-style-type: none"> • Campus projects equal to or less than \$100k • All schools/colleges • Renovations | <ul style="list-style-type: none"> • New Equipment • Infrastructure Needs |
|---|---|