

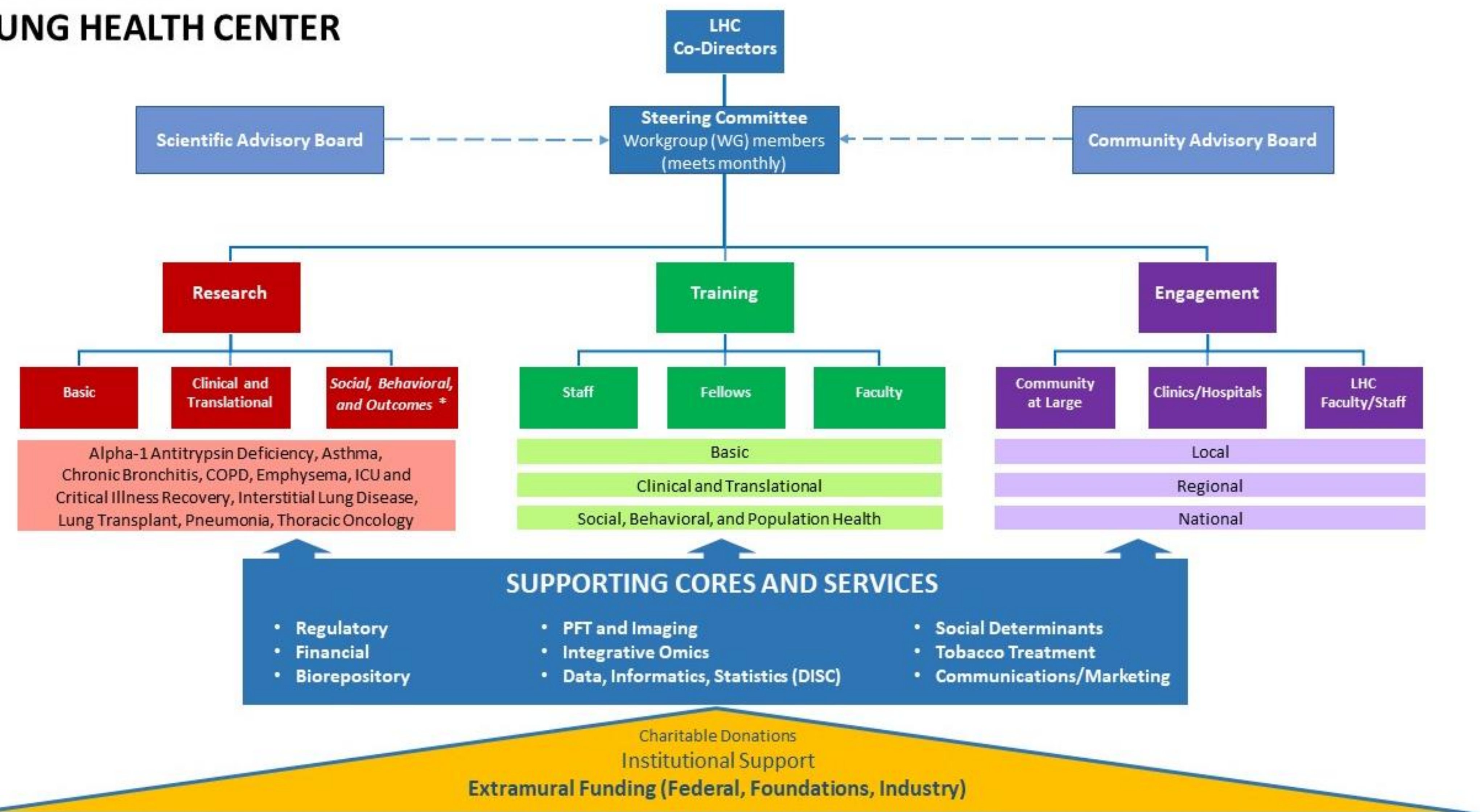
THE UAB LUNG HEALTH CENTER

ABOUT

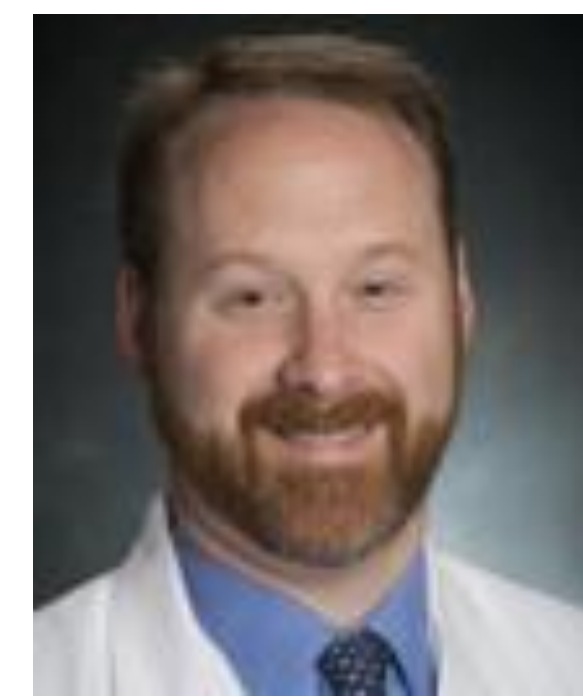
Our **mission** is to advance lung health through innovative research, education, and patient-centered care. Whether you are a study participant or a scientific investigator, we are committed to ensuring that your experience with the UAB Lung Health Center is worthwhile.



LUNG HEALTH CENTER



LHC LEADERSHIP



Mike Wells, MD, MSPH
Medical Director



Amit Gaggar, MD, PhD
Scientific Director



Gabriela Oates, PhD
Director, Population Health Science

TRAINING AND EDUCATION

- T32 training program in lung biology and translational medicine

For more information about the T32 program, scan the QR Code



- Research in Progress seminars



Pictured: Pulmonary Grand Rounds presentation

COMMUNITY ENGAGEMENT

Community engagement advances lung health

- Raising awareness through education
- Promoting prevention and early detection
- Building community trust and credibility
- Addressing health disparities
- Informing research and program development

Programs

- **Better Breathers Club:** In-person support group
- **Healthy Communities for a Tobacco-Free Future:** E-cigarette prevention for middle- and high-school students in Birmingham Metro area
- **Pulmonary Function Testing:** On-site PFT testing at community events



MEMBERSHIP

- **60+** UAB investigators
- **6** schools, **11+** departments/divisions

Membership is open to all UAB faculty with lung-related research interests

MEMBERSHIP BENEFITS:

- Access to LHC research services
- Access to facilities and expertise
- Pilot funding opportunities
- Networking and collaboration

To become a member

Contact the LHC at
205.934.5555 or
scan this QR code



CONTACT US

WEBSITE:



EMAIL: LungHealth@uabmc.edu

PHONE: 205.934.5555



RESEARCH

- The Lung Health Center (LHC) facilitates research across the translational spectrum:
 - **Basic**
 - **Clinical and translational**
 - **Social and behavioral**
 - **Outcomes and health services**
 - **Population health**
- The LHC supports **98 active research projects**



SERVICES

- Participant recruitment
- Regulatory
- Data management
- Biospecimen repository and laboratory services
- Pulmonary Function Testing laboratory
- Lung imaging
- Integrative 'omics laboratory
- Small animal cardiopulmonary physiology services
- Tobacco treatment
- Social Determinants of Health Core

To request services

Fill out the survey
in this QR code

