



Just for the fun of it . . .

8 PRODUCTIONS and 4 RECEPTIONS for only \$20.

THEATRE

JESUS CHRIST SUPERSTAR



October 6-8 and 13-15 at 8:00 p.m. and
October 9 at 2:00 p.m. at Bell Theatre.

WORLD PREMIERE PLAY

October 25-29 at 8:00 p.m. and

October 30 at 2:00 p.m. at Bell Theatre

An exciting world premiere play. Recipient of
the Ruby Lloyd Apsey playwriting award and
Theatre UAB's 1984 American College Theatre
Festival entry.

THE THREE CUCKOLDS

February 14-18 at 8:00 p.m. and

February 19 at 2:00 p.m. at Bell Theatre

A play created by Leon Katz from an anonymous
scenario of the *commedia dell'arte*. Three dense
husbands, three pretty wives, a very clever
servant, acrobatics, old jokes, bright colors,
and the original slapstick. You'll live happily
ever after.

HOLD ME!

March 27-31 at 8:00 p.m. and

April 1 at 2:00 p.m. at Hulsey Center,
Studio 311

Once again UAB Theatre and Dance and Alpha
Psi Omega team up to present an evening of
exciting theatre. Three women and two men
talk, shout, laugh and cry about the problems
of living in our modern day world. *Hold Me!*
is a contemporary "slice-of-life" drama from
the wickedly funny pen of Jules Feiffer.



April 24-28 at 8:00 p.m. at Bell Theatre

WARNING: This play, by Martin Sherman,
realistically depicts the Nazi persecution of
homosexuals in concentration camps during
World War II. It contains graphic violence,
nudity and adult language. Parental discretion
is strongly advised.

DANCE

UAB will present three exciting dance
concerts ranging from the classics to the
modern. The beautiful expression of life
through the graceful movements of UAB
students will be choreographed by Edith
Barnes and Stevan Grebel.

Let your imagination soar as you enjoy
three stimulating evenings in the world of
music and dance.

BALLET — Fall Repertory

November 11 & 12 at 8:00 at the Bell
Theatre

DANSCAPE

March 2 & 3 at 8:00 at the Bell Theatre

BALLET — Spring Repertory

May 11 & 12 at 8:00 at the Bell Theatre

934-3236

UAB
DEPARTMENT OF THEATRE, DANCE & MUSIC
PRESENTS

JESUS CHRIST SUPERSTAR



Music by
ANDREW LLOYD WEBBER
Lyrics by
TIM RICE

Originally Produced on Broadway
by
ROBERT STIGWOOD & MCA,
Inc.
by special arrangement
with **DAVID LAND**

July 15 & 16, 22 & 23 — 8:30 pm
at Brierfield Ironworks Park

Compliments to the
University of Alabama in Birmingham
and the Brierfield Ironworks Park
from your friends and neighbors at

Kimberly Clark Corporation



Coosa River Newsprint, Pulp and Forest Products Company

Coosa Pines, Alabama

The University of Alabama in Birmingham's
Department of Theatre, Dance & Music
and the Brierfield Ironworks Park

present

JESUS CHRIST SUPERSTAR



music by
Andrew Lloyd Weber

lyrics by
Tim Rice

originally produced
on Broadway by
Robert Stigwood & MCA
by special arrangement
with David Land

PRODUCERS

Bob Yowell
Martin L. Everse

DIRECTOR

Rick Plummer

SET & LIGHT DESIGNER/ TECHNICAL DIRECTOR

Morgan Billingsley

COSTUME DESIGNER

Kathleen Nuernberg

CHOREOGRAPHER

Edith Barnes

MUSIC DIRECTOR

Ron Reitz

ASSISTANT DIRECTOR/ STAGE MANAGER

Carolyn Billingsley

SET CONSTRUCTION CHIEF

Malcolm Theodore Burnett

"Jesus Christ Superstar" is presented through special arrangement with Music Theatre International, 119 West 57th Street, New York, NY 10019. This production is made possible with the support of the Alabama State Council on the Arts and Humanities.



BRENT BANKING COMPANY

Post Office Box B
Brent, Alabama 35034

Phone (205) 926-4627

Member F.D.I.C.

FRIENDLY SERVICE TO BIBB COUNTY SINCE 1912

The Producer: **BOB YOWELL**

Dr. Bob Yowell is Chairman of the Department of Theatre and Dance at the University of Alabama in Birmingham. After he received his Ph.D. from Bowling Green State University in 1972, Dr. Yowell went on to teach at Western Carolina University and the University of Arkansas at Little Rock. Included in his directing credits are *Antigone*, *Pippin*, *Tartuffe*, *Death of a Salesman*, and most recently UAB's production of *Equus*. In 1983, Dr. Yowell's production of *Grease* won UAB an Obelisk award for Best Direction of a Musical Play.



The Director: **RICK PLUMMER**

Rick Plummer is Assistant Professor of Theatre at the University of Alabama in Birmingham, where he directs the acting sequence. Dr. Plummer has a varied career as a professional actor, director and teacher. His acting/directing credits include Off-Off-Broadway, TV, stock, tour and university/community theatre. He has taught at the University of Arkansas at Little Rock; Southern Illinois University, where he earned his Ph.D. as a teaching fellow; and at Manchester College.

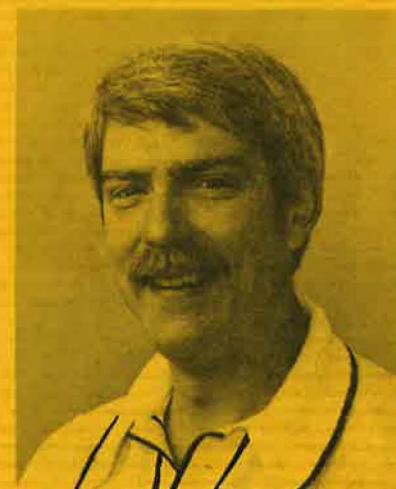
No newcomer to outdoor drama, Dr. Plummer directed the world premiere and subsequent season of *The Firemakers*, in Bristol, Indiana; served as production stage manager for the world premiere of *Dust on Her Petticoats*, in Tulsa, Oklahoma; and has been the assistant director for the 1980 and 1982 seasons of *The Smoky Mountain Passion Play*.



Set & Light Designer/

Technical Director: **MORGAN BILLINGSLEY**

Morgan Billingsley, an Assistant Professor in the UAB Department of Theatre and Dance, received his Master of Fine Arts degree from the University of Mississippi. Having worked professionally with movies, television, concerts, theatre and dance groups, his credits include Lighting Designer/Technical Director/Stage Manager for the Jackson Ballet, 1980-82; Alabama Dance Theatre's production of *The Nutcracker*; Lighting Director for *Bolero*, PBS/Mississippi ETV; and Production Stage Manager for the 1st and 2nd USA International Ballet Competitions. Mr. Billingsley will be Lighting Consultant for the Mississippi Pavillion at the 1984 World's Fair in New Orleans.



MONTEVALLO MANIA

sponsored by

CENTRAL GARDEN CLUB
MONTEVALLO FIRE DEPARTMENT
MONTEVALLO CHAMBER OF COMMERCE

OCTOBER 8, 1983

9:00 a.m. - 4:00 p.m.

**Arts & Crafts
Parade**

Live Entertainment

Bar-be-que

Games & Fun

For Booth Information Call

665-7292

665-2964



HOUSE OF SERENDIPITY

"Where the Unexpected is Found"

Art Supplies,
Cards,
Gift Items,
Games & Puzzles

Depression Era Collectibles, Stuffed Toys

**13 S. MAIN ST.
MONTEVALLO, AL**

ROCKCO'S FLORIST

Highway 25 South
Montevallo



BETH'S FLOWERS & GIFTS

145 Main Street
Montevallo

*When you think of flowers,
think of ours*



665-2948

665-2032

Barton's Custom Decor

429 WALNUT STREET
CENTREVILLE, ALABAMA 35042

For All Your Decorating Needs

CUSTOM CABINETS • WALLPAPER
PITTSBURGH PAINTS • APPLIANCES

**JAMES A. BARTON
OWNER**

(205) 926-9301

Music Director: RON REITZ

Ron Reitz has been Director of Bands at UAB since 1981. He was formerly the Director of Bands at Jackson State Community College in Jackson, Tennessee. Mr. Reitz has conducted community productions of *Man of La Mancha*, *Fiddler on the Roof*, *Music Man* and the Fall '83 production of *Grease*. He has a B.M.E. from Florida State University and a M.M.E. from Indiana University.



Choreographer: EDITH BARNES

Edith Barnes, an Associate Professor of Dance at UAB, received her Master of Fine Arts Degree in Dance from the University of North Carolina at Greensboro. Her experience includes choreographing over twenty modern dances at UAB; choreography for *Fiddler on the Roof*, *My Fair Lady*, *Camelot*, *The King and I*, and *The Sound of Music*. In 1976, she choreographed several dances for NBC's Today Show, "A Bicentennial Salute to Alabama."

Costume Designer: KATHLEEN NUERNBERG

Kathleen Nuernberg, Assistant Professor of Theatre and Dance, received her Master of Fine Arts degree from the University of Wisconsin-Madison. Ms. Nuernberg has designed for several professional companies including the Virginia Shakespeare Festival and the Great Lakes Shakespeare Festival. She has also designed for the University of Wisconsin's Children's Theatre, Backdrop Players, Sinfonicon Opera Company, and the Front Royal Little Theatre.



Publicity Director: CAROLYN BILLINGSLEY

Carolyn Billingsley is currently a Theatre Management Consultant at UAB. Her professional experience includes Performing Arts Program Director at the Mississippi Arts Commission, Assistant Administrator of the Jackson Ballet, and Assistant Touring Manager for the University of Mississippi's production of *Godspell*. Mrs. Billingsley received her Master of Arts degree from the University of Mississippi.

Carl's Family Hair Care Center



OPEN EVENINGS BY APPOINTMENT

Carl Love
Phone: 665-4317

20 Main St.
Montevallo, AL



Columbiana — 669-6731
Harpersville — 672-2224
Montevallo — 665-1281
Chelsea — 678-8064

For All Your Building and Hardware Needs

BELCHER MOTOR COMPANY

soon to become

BUD BURNETT FORD

CENTREVILLE, ALABAMA

Authorized Ford car and truck dealer

926-4896

COMPLETE AUTO SERVICE



REAL ESTATE

RENTALS AND SALES — INSURANCE

AGENTS:

Laura Roberts • Marcia Wall
Catherine Legg

117 East Main Street

665-2364

665-2163

MUSICAL NUMBERS

Act I

Overture	Orchestra
Heaven on their Minds	Judas
What's the Buzz	Jesus, Mary Magdalene, Apostles
Strangething, Mystifying	Judas, Jesus, Company
Everything's Alright	Mary Magdalene, Jesus, Judas, Company
This Jesus Must Die	Caiaphas, Annas, Company
Hosanna	Jesus, Caiaphas, Company
Simon Zealotes / Poor Jerusalem	Simon, Jesus, Company
Pilate's Dream	Pilate
The Temple	Jesus, Company
Everything's Alright	Mary Magdalene, Jesus
I Don't Know How to Love Him	Mary Magdalene
Damned for All Time / Blood Money	Judas, Annas, Caiaphas, Company

15 Minute Intermission

Act II

The Last Supper	Jesus, Judas, Apostles
Gethsemane	Jesus
The Arrest	Peter, Jesus, Apostles, Caiaphas, Annas, Company
Peter's Denial	Peter, Mary Magdalene
Pilate & Christ	Pilate, Jesus, Herod, Company
King Herod's Song	Herod
Could We Start Again, Please	Mary Magdalene, Peter, Company
Judas' Death	Judas, Caiaphas, Company
Trial by Pilate	Pilate, Caiaphas, Jesus, Company
Superstar	Judas, Company
Crucifixion	Jesus, Company

CAST

Jesus	Russ Beasley
*Judas Iscariot	James Stovall
Mary Magdalene	Margery Pegues
Caiaphas	Bart Grooms
Peter	Greg Lowrey
Pontius Pilate	Jack Cannon
Annas	Joe Bowlby
Herod	Bob Penny
Simon	Mark Germain
Apostles	Johnny Armstrong, Mark Clive, Wisdom Donkor, Gary Earnest, Steve Hill, Kraig Johnson, Mitchell Nash, Jack Pyle
Tormentors	Lyn Johnson, Billy McCoy, Sara Orr, Rebecca Tulley
Company	Kirk Alford, Stephanie Bolar, Mary Cicio, Doug deVille, Wisdom Donkor, Gary Earnest, Sandi Gibson, Karen Gracianette, Tanya Harrison, Sallie Higgins, Steve Hill, Linda Hilley, Kelly Jackson, Kenny Jeff, Ken Lagle, Caroline Marx, Rebecca McDowell, Bob Penny, Steve Pickett, Jack Pyle, Rick Turner

*Appears through the courtesy of Actors Equity Association

MUSICIANS

Alex Quick & Russell Williams	Keyboards and Rehearsal Pianist
Larry Ward	Guitars
Robert Kaye	Electric Bass
James Hoskins	Percussion
Doug Ury	Synthesizers

Special Thanks to: Doug Carroll for his tape realization of the Crucifixion and Nuncies Music for donating the use of the Roland Synthesizer

PRODUCTION/ADMINISTRATIVE STAFF

Producers	Bob Yowell, Martin L. Everse
Director	Rick Plummer
Music Director	Ron Reitz
Choreographer	Edith Barnes
Set & Light Designer / Technical Director	Morgan Billingsley
Costume Designer	Kathleen Nuernberg
Assistant Director / Stage Manager	Carolyn Billingsley
Costume Shop Supervisor	Helen Robbins
Costume Shop Assistants	Jeff Todhunter, Jacky Randall
Prop Construction Crew	Steve Bailey, Mona Collins, June Hyatt, Kenny Jeff, Tonly Lombardo, Jay Marks, Joe Mass, Carla Montgomery, Clare Moody, Melanie Morris, Tammy Roberts, Onnie Williams
Property Master	Doug deVille
Light Crew	Phillip Lindsay, Joan McLaughlin
Sound Operator	Kyle Clark

•OUR BANK IS HOME OWNED •OUR ONLY INTEREST IS SHELBY COUNTY

We are owned by Hundreds of Shelby County Stockholders, people just like you!

MONEY THAT YOU DEPOSIT OR BORROW AT OUR BANK
HELPS OUR HOMES, OUR SCHOOLS, OUR CHURCHES,
OUR CITIES, OUR COUNTY, OUR BUSINESSES, OUR JOBS.

Shouldn't You Be Banking With Us?

SHELBY BANK
YOUR HELPING HAND

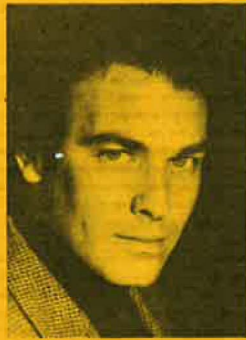
PELHAM
663-0723

COLUMBIANA
669-4123

MONTEVALLO
665-4900

HELENA
663-0727

THE CAST



JESUS: Russ Beasley has performed in more than twenty stage productions under the jurisdiction of Actors Equity Association. He had featured roles in the Tony nominated Broadway musicals *Gigi* and *Very Good Eddie* and has appeared in dinner theatres, night clubs, Off-Broadway, LORT theatres and national tours as well as in soap operas and in national commercials. Locally, Mr. Beasley has appeared as a guest artist for UAB's Town and Gown Theatre three times and was the tenor soloist in the Beethoven Choral Fantasy with the Birmingham Symphony. As a teacher, he has been on the faculties of several colleges including Long Beach State University in California and Birmingham Southern College.

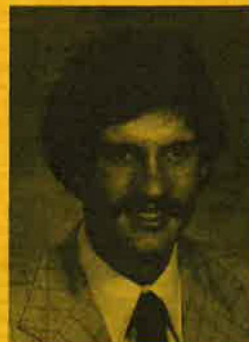
JUDAS: James Stovall, a native of Baltimore, has been performing since childhood. He studied theatre, dance, and voice at Morgan State University with Joseph Eubanks and "Fame's" Debbie Allen. While at Urban Musical Theatre in Washington, he premiered in *Billy Noname* and *The Me Nobody Knows*. As a soloist with the Morehouse College Glee Club, he performed at Avery Fisher Hall-Lincoln Center, President Carter's inauguration, and a special White House Concert in the East Room. His other performance experience includes roles in *Porgy and Bess*, and the operas "Rigoleto," "Die Fledermaus," and "Madame Butterfly."

*Mr. Stovall appears through the courtesy of Actor's Equity Association.



MARY MAGDALENE: Margery Pegues is currently Assistant Professor of Music at the University of Alabama in Birmingham. Her performance experience includes Soprano soloist to the Spoleto Contemporary Music Festival in Spoleto, Italy; soloist in a European tour of classical and contemporary music; U.S. representative in the Cultural Exchange Program Concert Tour to Russia and Spain; and a member of the original cast in Houston Grand Opera Company's national tour of *Porgy and Bess*. Ms. Pegues has also performed professionally as soloist on television and acted in commercials and stock theatre.

CAIAPHAS: Bart Grooms is a Pastoral Counseling Resident at Baptist Medical Centers. A graduate of Vanderbilt University, Mr. Grooms has acted in several productions, including *A Cry of Players* and *The Wild Duck*, and the musicals *Whispers on the Wind* and *The Fantasticks*. As a vocalist, he performed with the UAB Good Time Jazz Band, Indian Springs Schools Glee Club, Vanderbilt Concert Choir and Vanderbilt Chamber Singers.



THE CAST



PETER: Greg Lowery will be a Freshman at Auburn University. His high school performing experience includes the roles of Pippin in *Pippin*, Perchick in *Fiddler on the Roof*, and Riff in *West Side Story*. Mr. Lowery won the 1983 Obelisk award for Best Male Performance in a Musical for his role of Danny Zuko in UAB's production of *Grease*.

PONTIUS PILATE: Jack Cannon has been acting in Birmingham for the past six years. A member of the Birmingham Shakespeare Ensemble and WBHM's Globe Playhouse of the Air, he makes his theatre home at UAB. Mr. Cannon has had lead parts in many productions including *The House of Blue Leaves*, *Equus*, *All the Way Home*, *Grease* and two seasons of Summerfest. In addition to acting, he has directed two shows and will be directing *Hold Me* at UAB next spring.



ANNAS: Joe Bowlby holds a Bachelor of Music degree from Birmingham Southern College. A tenor soloist at St. Mary Episcopal Church, he played lead roles in *Magic Flute*, *Kiss Me Kate*, *Postcard from Morocco*, and *Show Boat*. In 1979, he appeared as a company member of the UAB Town and Gown's Summerfest.

HEROD: Dr. Bob Penny is an Associate Professor of English and Theatre at UAB. He has directed and acted in several Off-Broadway productions as well as appeared in several lead roles in Birmingham. During the past years he has been seen in *The Diary of Anne Frank*, *Butley*, *The Tempest*, *Waiting for Godot*, *A Christmas Carol* and UAB's *Bedroom Farce*. Next fall, Dr. Penny will tour with the Birmingham Children's Theatre production of *Rumplestiltskin* through six states, including New York.



SIMON: Mark R. Germain, an Art History major at UAB, has performed in dance, music and theatre productions. Some of his credits include roles from *Anyone Can Whistle*, *House of Blue Leaves*, *Night of January 16th*, and *Godspell*.

Bibb Cable TV Bibb Communications Inc.



926-4330

P. O. Box 458 Centreville, AL 35042

S T H E A T R E R A N D

Main Street
Montevallo

665-5134

Showtime 7:30

We are here to entertain you. The next time you think of having a party, think of having a theatre party.

NO PARTY TOO SMALL — NO PARTY TOO LARGE

The Kathy Draper School of Dance




offers instruction in

**BALLET • TAP • JAZZ • BATON
GYMNASTICS • SLIMNASTICS
BALLROOM DANCING**

Two Locations:
Pelham Plaza Mall (Next to Food World)
Montevallo Legion Hut (Wilson Street)

*For more information and to register for Fall Classes
CALL*

KATHY DRAPER — 663-6490



SYLVIA HUDSON

Architectural/Interior Designer

CONSULTATION & DESIGN SERVICES

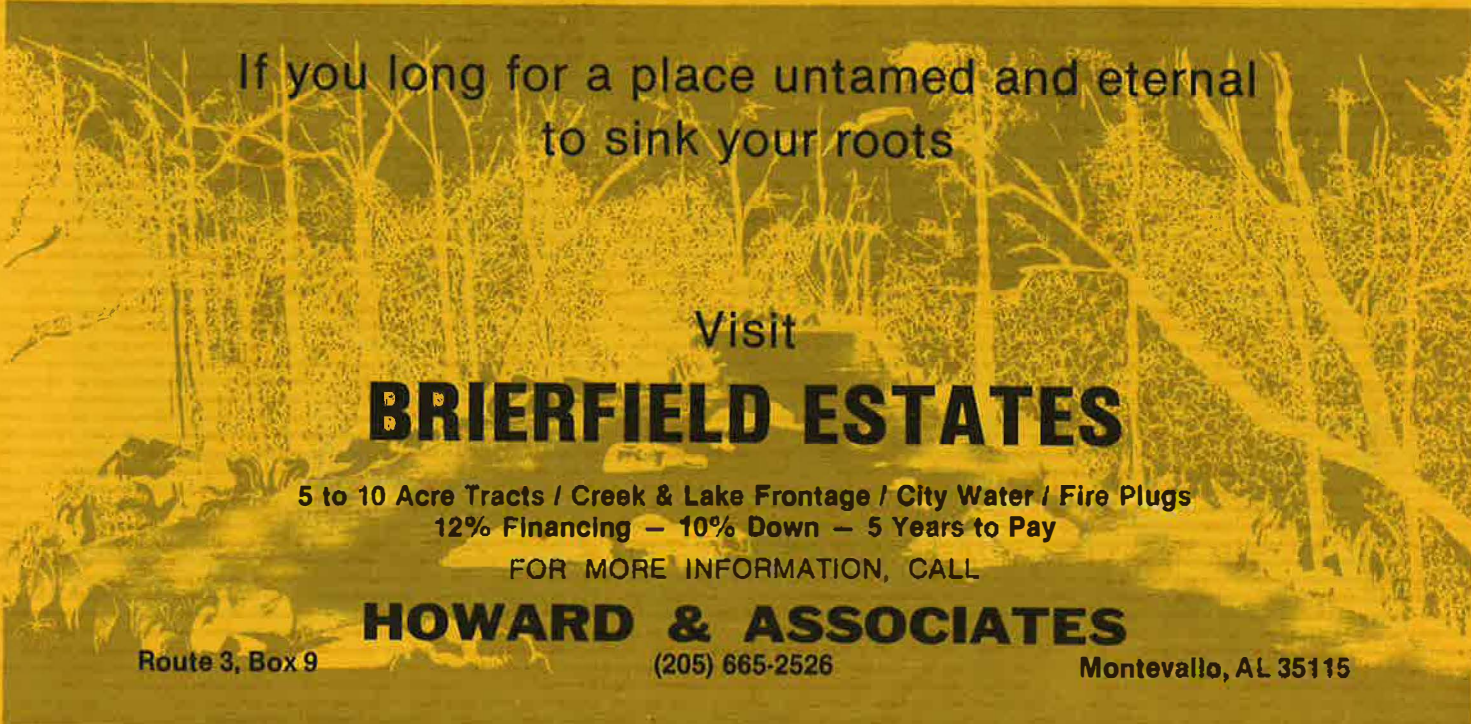
'A Unique Design Studio'

433 Parkway Circle, Montevallo / 665-7715

A 1965 Graduate of Parsons School of Design, N.Y.

University of Alabama in Birmingham 1983-84 Concert Schedule (Department of Music)

Super Jazz Band Concert Sunday, Sept. 25, 3 p.m.
Fall Concert — University Chorus and Chamber Singers Saturday, Nov. 19, 8 p.m.
Jazz/Rock Ensemble Sunday, Nov. 20, 3 p.m.
After-Six Singers Show — Choir Performance Monday, Nov. 21, 8 p.m.
Super Jazz Band Sunday, Dec. 4, 3 p.m.
Jazz/Rock Ensemble and Super Jazz Band Sunday, Feb. 26, 2 p.m.
After-Six Singers Show — Choir Performance Monday, Mar. 5, 8 p.m.
Winter Concert — University Chorus and Chamber Singers Saturday, Mar. 10, 8 p.m.
Weekend of Jazz IV April 6-8
Jazz/Rock Ensemble and After-Six Singers Sunday, May 20, 3 p.m.
Spring Concert — University Chorus and Chamber Singers Saturday, May 26, 8 p.m.
Good-Time Jazz Band Sunday, May 27, 3 p.m.



If you long for a place untamed and eternal
to sink your roots

Visit

BRIERFIELD ESTATES

5 to 10 Acre Tracts / Creek & Lake Frontage / City Water / Fire Plugs
12% Financing — 10% Down — 5 Years to Pay

FOR MORE INFORMATION, CALL

HOWARD & ASSOCIATES

Route 3, Box 9 (205) 665-2526 Montevallo, AL 35115

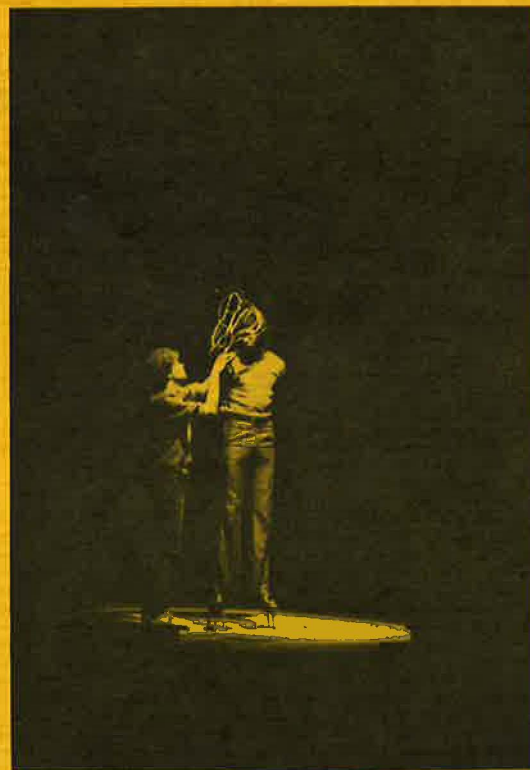
THEATRE/DANCE UAB

The Department of Theatre and Dance at UAB offers a wide range of opportunities for participation in its multi-faceted academic and production programs. Unlike many performing arts departments, Theatre/Dance UAB offers intimate, "hands-on" educational experience. Small classes drawn from one of the state's most comprehensive theatre/dance curriculums insure direct and personal instruction, and all students at UAB are invited to work as either actors, dancers or technicians in representative world dramas, ballets, modern, jazz and specialty dance concerts from a rich and varied production season.

Administered within the College of Humanities, the Theatre/Dance program has strong ties with the departments of Music and English, making it possible to offer a unique blend of the Humanities and the Performing Arts. Several areas of emphasis are available for the Theatre/Dance major: Acting/Directing concentration; Technical Theatre concentration; Ballet; Modern/Jazz; an unusual Theatre/Dance emphasis; an interdisciplinary major, offered in cooperation

with the English Department, entitled "The Dramatics of Literature"; and a generalist's Theatre concentration.

As the performing arts embrace a wide range of disciplines, Theatre/Dance UAB is committed to solid training within the liberal arts context. Academic and production programs include opportunities for both the student who wants only to enrich self expression and develop cultural sensibilities and the student with professional interests in the arts. A large percentage of students take Theatre/Dance course primarily to develop greater awareness and expressiveness or to gain skills which will ultimately be used avocationally or in vocations outside Theatre/Dance. A small number pursue careers in professional theatre and dance or plan to teach. However, all courses aim for a high level of critical and performance skill, and no qualitative distinctions are made in terms of students' goals.



These several programs are reinforced by a rich production season at the Bell Theatre, the Hulsey Performing Arts Center Studio Theatre 311, and at various "found" spaces across the UAB campus and around the state. The Birmingham Shakespeare Ensemble tours Jefferson County Schools as Artists in Residence, and the Globe Playhouse of the Air, heard regularly on WBHM, offers unique experience in classical radio drama. Ballet UAB, Danscape UAB, and Town and Gown Theatre all provide many opportunities for practical training at UAB. One exciting feature of Theatre/Dance UAB is its commitment to student directed, designed and choreographed works. Under faculty supervision, students produce their own theatre and dance. Students may earn credit for all production involvement at UAB, and such opportunities are nearly as extensive as the student chooses.



Christmas in July
25% OFF
All Christmas Orders



PAM MIDDAUGH, POTTER
18 WEST MIDDLE STREET
MONTEVALLO, AL 35115
(205) 665-7774



Adkins
Electronics
Television Sales & Service

17 West Middle Street
 Montevallo, Alabama

665-5213

IN-HOME SERVICE CALLS

World Famous Barbecue!

TWIX 'N TWEEN

Drive thru window

Open
24 Hours

HWY 82

CENTREVILLE, AL

HUGHES
BUILDING COMPANY

P. O. BOX 212/MONTEVALLO, ALABAMA 35115
 205/665-1231

ROBERT B. HUGHES, JR.

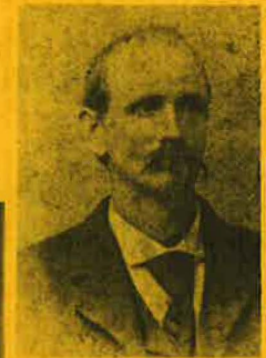
BRIERFIELD IRONWORKS PARK

Tucked deep in the forests of Bibb County, the Brierfield Ironworks Park offers a little bit of something for almost everyone. Muzzle loading rifle shoots and ballet, gospel singings and summer theatre and bluegrass festivals and chain saw contests are some of the activities that folks enjoy around the ruins of the old furnace. If you would like to keep abreast of events and learn more of Alabama's rich heritage, consider making a tax deductible donation and receive the Park newsletter, the *Brierfield Puddler*, as well as other gifts.

In the *Puddler*, you will read about Brierfield's sometimes tragic, at other times heroic but always colorful past. Issues have included excerpts of a Yankee cavalry officer's journal as he passed through central Alabama on Wilson's Raid and an oral history with Brierfield's long-time citizen and legend weaver, Jessie "Jaybird" Rutledge.

Contribution categories include:

- \$ 10 — Collier — Subscription to the *Puddler*
- \$ 25 — Ironworker — Bibb Furnace Mug / *Puddler*
- \$ 50 — Puddler — Bibb Furnace Pitcher / *Puddler*
- \$100 — Founder — Bibb Furnace Print / *Puddler*
- \$500 — Ironmaster — Copy of 1867 Brierfield Ironworks Co. stock certificate matted and framed / *Puddler*



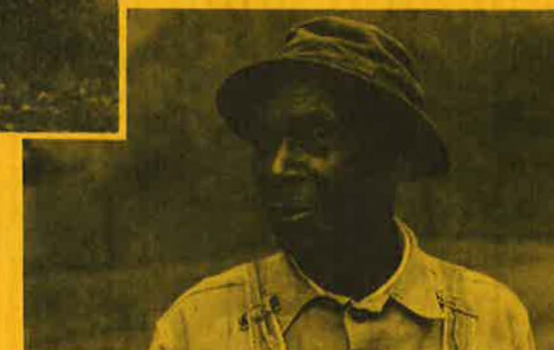
Please give serious consideration to helping the Brierfield Ironworks Park continue to offer a wide range of cultural, historical and recreational activities. The Park relies to a great extent on private contributions for support. And if the Park can ever be of assistance to you in planning a family reunion or holding a fund-raising event for your favorite charity, just let us know.

Name _____

Address _____

City _____ State _____ Zip _____

- | | |
|---|--|
| <input type="checkbox"/> \$ 10 Collier | <input type="checkbox"/> \$ 50 Puddler |
| <input type="checkbox"/> \$ 25 Ironworker | <input type="checkbox"/> \$100 Founder |
| <input type="checkbox"/> \$500 Ironmaster | |



Make checks payable to:
BCHA-Brierfield Ironworks Park
Route 1, Box 32
Brierfield, AL 35035